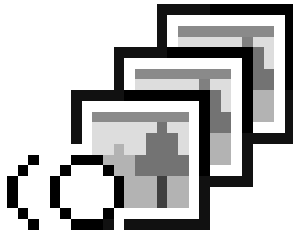


PictureGear Pocket

Operating Instructions



Introduction

What is PictureGear Pocket?

What is PictureGear Pocket?

PictureGear Pocket is a picture album application for Personal Entertainment Organizer (CLIE handheld).

Anytime anywhere...

PictureGear Pocket enables you to store still pictures from various sources including those taken with a digital camera or those downloaded from the Internet in CLIE handheld. You can look at your favorite pictures anytime and anywhere.

Using PictureGear Pocket to present your creative work!

Display the desired pictures in a sequence using the Slide Show function. PictureGear Pocket helps you make presentations using illustrations drawn on a computer or pictures taken with a digital camera.

Beam my pictures...

Use IR (Infrared) communication to send and receive pictures easily with other users of CLIE handheld.

Jog Dial and Memory Stick support

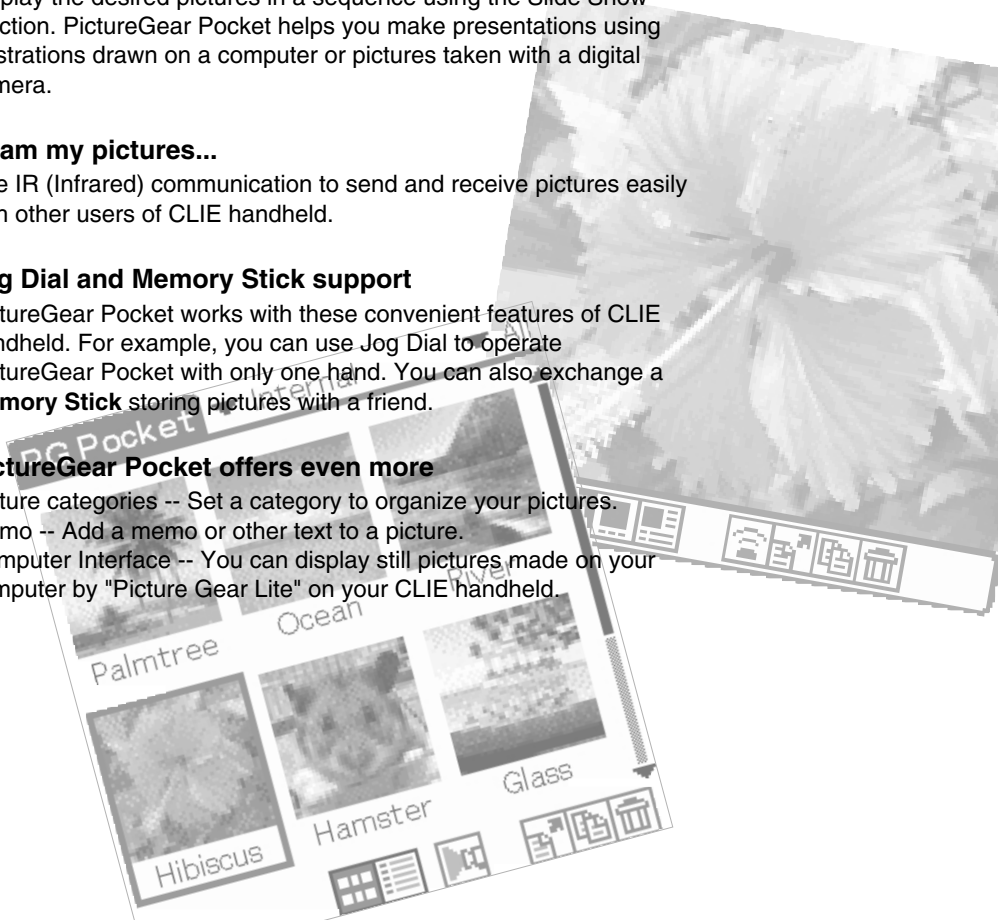
PictureGear Pocket works with these convenient features of CLIE handheld. For example, you can use Jog Dial to operate PictureGear Pocket with only one hand. You can also exchange a **Memory Stick** storing pictures with a friend.

PictureGear Pocket offers even more

Picture categories -- Set a category to organize your pictures.

Memo -- Add a memo or other text to a picture.

Computer Interface -- You can display still pictures made on your computer by "Picture Gear Lite" on your CLIE handheld.



Contents

0	[Introduction] 0.2	
	What is PictureGear Pocket?.....0.2	
	Contents.....0.3	
	Before Using PictureGear Pocket.....0.4	
	Terms.....0.5	
	Symbols.....0.6	
1	[Setup and Startup] 1.1	
	Display Mode and Functions.....1.2	Memo Mode (Browse Mode).....1.3
	Preview Mode (Selection Mode).....1.2	Information Mode (Browse Mode).....1.3
	List Mode (Selection Mode).....1.2	Startup and Basic Screens.....1.4
	Full Screen Mode (Browse Mode).....1.3	
2	[Viewing and Organizing Pictures] 2.1	
	Specifying Storage and Category.....2.2	Slide Show.....2.5
	Specifying a storage location.....2.2	What is Slide Show?.....2.5
	Specifying a category.....2.2	Organizing Pictures.....2.6
	Selecting a Picture.....2.2	Sorting Pictures.....2.6
	Selecting a picture in [Preview Mode].....2.2	Add comments.....2.6
	Selecting a picture in [List Mode].....2.3	Deleting.....2.7
	Browsing Pictures.....2.4	Moving or Copying.....2.8
3	[Advanced Functions of PictureGear Pocket] 3.1	
	Beam Pictures to Another CLIE Handheld.....3.2	Using PictureGear Pocket in other applications...3.6
	Preparations.....3.2	Pasting to Address Book.....3.6
	Selecting a picture.....3.2	
	Beam a picture.....3.2	
	Handling Pictures on a Memory Stick3.3	
	Picture (camera pictures) taken by a digital still camera.....3.3	
	Browsing the pictures on Memory Stick3.3	
	Restrictions on [Camera Picture].....3.4	
	Saving in CLIE Handheld.....3.4	
4	[PictureGear Lite] 4.1	
	What is PictureGear Lite?.....4.2	Start.....4.3
	Installation of PictureGear Lite.....4.3	Help.....4.3
5	[Help Guide] 5.1	
	Troubleshooting.....5.1	During Infrared communication.....5.2
	When you access a Memory Stick5.1	Index.....5.3

Before Using PictureGear Pocket

This is the PictureGear Pocket operation manual. It provides instructions on picture browsing in CLIE handheld using PictureGear Pocket.

Please refer to the Operating Instructions manual of CLIE handheld itself for details on the handling of **Memory Sticks**.

Warning

This product is not for use with other PalmOS products.

PictureGear Pocket is for exclusive use with CLIE handheld. It may not be used with PalmOS products of other brands. If it is used, the performance is not guaranteed.

Caution | Precautions

1. The copyright of PictureGear Pocket belongs to Sony Corporation.
2. The copyright of this manual belongs to Sony Corporation.
3. It is not allowed to copy, in whole or in part, this software or manual.
4. The software and manual may be changed without prior notice.
5. We do not take any responsibility for the results of using this software and manual.

Trademark

CLIE, Memory Stick, the Memory Stick logo, MagicGate Memory Stick, the MagicGate Memory Stick logo and PictureGear Pocket are trademarks of Sony Corporation.

PalmOS, HotSync is a trademark of Palm, Inc. or its subsidiary.

Windows® is a trademark of Microsoft Corporation in U.S. and other countries.

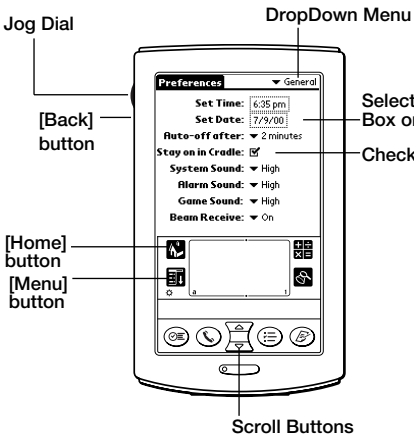
QuickTime and the QuickTime logo are trademarks used under license.

QuickTime is registered in the U.S and other countries.

Other brands and product names may be trademarks of each owner.

Terms

Terms



Tap

To touch the screen with the Stylus tip momentarily is called "tap".

You tap for "Set" and "Select" operations.

Drag

To draw the Stylus tip along the screen slowly is called "drag".

You drag to "Move" an item on the screen.

DropDown Menu

An item with a down arrow (▼) on the left is called a "DropDown Menu". When you tap the down arrow (▼), a menu appears.

Selection Box or Box

The dotted-line frame displayed for selecting an item on setting screens is called a "Selection Box" or "Box". When you tap the box, the screen is switched or the box turns blue. When the box is blue, it means that the item is selected.

Check Box

The box displayed for selecting an item on setting screens is called a "Check Box". When you tap the Check Box, a check mark ☑ appears in the box and this item is selected.

Scroll Buttons

The buttons vertically aligned at the lower part of CLIE handheld is called "Scroll Buttons". You use these buttons to scroll the screen.

Jog Dial

The dial on the left side of CLIE handheld is called "Jog Dial". You can use the Jog Dial with just one hand to perform the same operations done by tapping.

[Home] button

The button to display [Home]. [Home] button is on the lower left corner of the CLIE handheld screen. By tapping [Home] button, [Home] appears.

[Menu] button

The button to display application menu. [Menu] button is on the lower left corner of the CLIE handheld screen. By tapping [Menu] button, a menu appears on the upper portion of the screen and a icons appears on the lower portion of screen.

[Back] button

The button to switch back to the previous screen.

Symbols

Symbols



Click the Jog Dial.

"Click" is to press and then to release the Jog Dial. The Jog Dial click operation is the same as to tap the screen with the Stylus, and it is for setting an item.



Rotate Jog Dial.

"Rotate" is to rotate the Jog Dial up or down. The Jog Dial rotate operation is moving between items.



Warning

Ignoring a "Warning" and thus performing improper operation may damage CLIE handheld and peripheral equipment.



Caution

Ignoring a "Caution" and thus performing improper operation may prevent CLIE handheld and its application software from delivering designed performance and functions or result in operational difficulty.



Hint

"Hint" provides valuable information to the use of the application software.



Reference

"Reference" points to detailed information or related information given elsewhere in this manual or other manuals.

1

Setup and Startup

Display Mode and Functions	1.2
Preview Mode (Selection Mode)	1.2
List Mode (Selection Mode)	1.2
Full Screen Mode (Browse Mode)	1.3
Memo Mode (Browse Mode)	1.3
Information Mode (Browse Mode)	1.3
Startup and Basic Screens	1.4

1 Setup and Startup

Display Mode and Functions

PictureGear Pocket provides five picture display modes for your various operations. The functions you perform vary depending on the display mode.

Name of each item on the screen

[Category] menu

Displays the category to which a picture belongs.

[Storage] menu

Displays the location (CLIE handheld or **Memory Stick**) where a picture is stored.

[Icon]

Switches the display mode and performs file operations.

[Scroll Arrow]

Indicates that there is a picture outside the screen. The picture is scrolled toward the direction in which you drag the screen with the Stylus.

[Memo]

Displays the first three lines of the comment field of [Information Mode].

[Thumbnail]

Reduced size picture.

[Title]

Name of picture.

[Date]

Year, month, date and time in which the picture was created.

[Category]

Category of a picture (the category is changeable).

[Comment]

Possible to input text.

Switching the display mode

[Preview Mode]

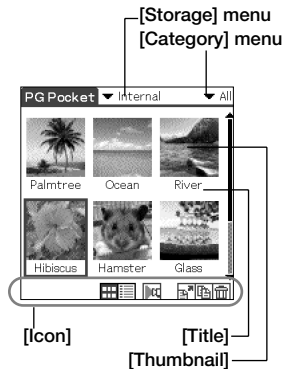
Preview Mode

(Selection Mode)



The mode to display pictures stored in CLIE handheld or a **Memory Stick** in the thumbnail (reduced size picture) format.

By tapping a thumbnail or clicking the Jog Dial, the mode is switched to [Full Screen Mode] and the tapped picture is magnified and displayed on the full screen. Press the [Back] button to return [Home] when the [Storage] menu displays [Internal].



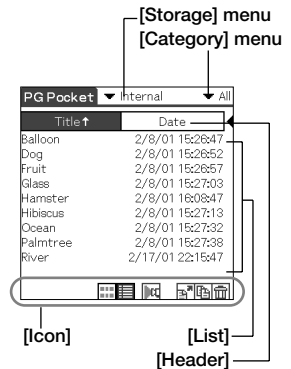
List Mode

(Selection Mode)



The mode to display the pictures stored in CLIE handheld or a **Memory Stick** using picture information such as titles of pictures and recorded date and time that are shown in a list format.

By tapping a title in the list, the mode is switched to [Full Screen Mode] and the picture tapped is displayed on the full screen. Press the [Back] button to return [Home] when the [Storage] menu displays [Internal].



[List Mode]

Tap [icon]

[Full Screen Mode]

Either tap a thumbnail or click the Jog Dial.

[Memo Mode]

-

[Information Mode]

-

Operation

Delete, Move, Copy, Categorize, Display Camera picture, Store Camera picture, Slide Show (setting)

Tap [icon]

-

Either tap a list or click the Jog Dial.

-

-

Delete, Move, Copy, Sort, Categorize, Display Camera picture, Store Camera picture, Slide Show (setting)

Full Screen Mode

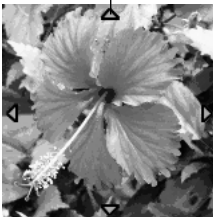
(Browse Mode)



The mode to display a picture selected by [Preview Mode] or [List Mode].

By clicking the Jog Dial or tapping the screen, the mode is switched back to [Preview Mode] or [List Mode].

[Scroll Arrow]



*Normally, [icon] is not displayed. To display [icon], tap the [Menu] button of CLIE handheld.

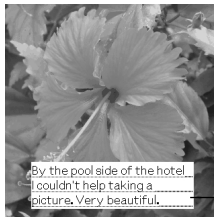
Memo Mode

(Browse Mode)



The mode to display a memo in the lower portion of [Full Screen Mode]. By clicking the Jog Dial or tapping the screen, the mode is switched back to [Preview Mode] or [List Mode].

[Memo]



*Normally, [icon] is not displayed. To display [icon], tap the [Menu] button of CLIE handheld.

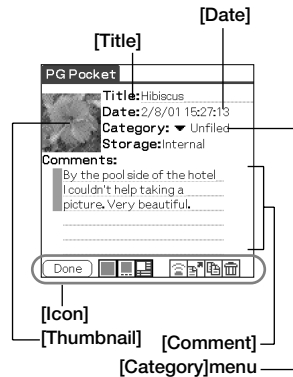
Information Mode

(Browse Mode)



The mode to display detailed information (reduced size picture, title, save date and time, category, comment) of a picture in [Full Screen Mode]. You can change the category of a picture, edit title and edit comments in [Information Mode]. The first three lines of a comment is also displayed in [Memo Mode].

By clicking the Jog Dial or tapping [Done] button, the mode is switched back to [Preview Mode] or [List Mode].




*Three lines text with the bar on the left side of the comment field is displayed in [Memo Mode].

Either tap the screen or click the Jog Dial.-

-

-

 Tap [icon]

 Tap [icon]

Delete, Move, Copy, Beam, Display Camera picture, Store Camera picture, Slide Show (display)

Either tap the screen or click the Jog Dial.

-

 Tap [icon]

-

 Tap [icon]

Delete, Move, Copy, Beam

Tap [Done] Button

Tap [Done] Button

 Tap [icon]

 Tap [icon]

-

Delete, Move, Copy, Beam, Change category, and Edit comment

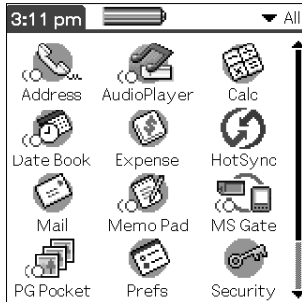
The PictureGear Pocket application is preinstalled in your CLIE handheld.

Startup and Basic Screens

Starting PictureGear Pocket

Tap [Home] button on CLIE handheld to get [Home].

By tapping the PictureGear Pocket icon, the PictureGear Pocket startup screen appears.



[Home]

2

Viewing and Organizing Pictures

Specifying a Storage and Category	2.2
Specifying a storage location	2.2
Specifying a category	2.2
Selecting a Picture	2.2
Selecting a picture in [Preview Mode]	2.2
Selecting a picture in [List Mode]	2.3
Browsing Pictures	2.4
Slide Show	2.5
What is Slide Show?	2.5
Organizing Pictures	2.6
Sorting Pictures	2.6
Add comments	2.6
Deleting	2.7
Moving or Copying	2.8

2 Viewing and Organizing Pictures



Specifying a Storage and Category

To view a picture, select the picture in [Preview Mode] or [List Mode], and display it in [Full Screen Mode] or [Memo Mode]. First, start up PictureGear Pocket and display [Preview Mode] or [List Mode].

Specifying a storage location

Select a storage location (CLIE handheld or **Memory Stick**) of your picture [Preview Mode] or [List Mode].

1. Tap [Location] menu and select the location from the storage location list.
2. When you select the storage location, category items are changed accordingly.

Specifying a category

You can classify your pictures using the item called "Category" in the storage location.

Reference: 2.6 "Organizing Pictures"

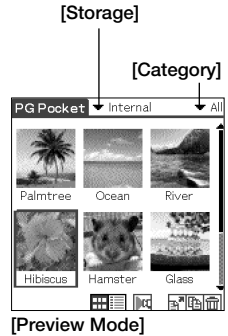
1. Tap [Category] menu and select the category item from the category list.
2. When you select a category item, a list of the pictures in the category is displayed.

Selecting a Picture

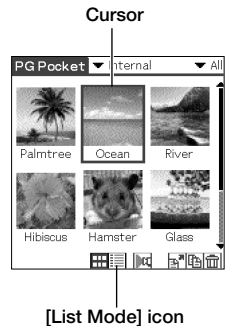
Select a picture in [Preview Mode] or [List Mode].

Selecting a picture in [Preview Mode]



1. Select a picture.
 - ④ By rotating the Jog Dial up and down, the square cursor moves on the thumbnails.
2. Display the full screen.
 - ➡ By clicking the Jog Dial, the display mode changes to [Full Screen mode] and the picture selected by the cursor is displayed on the full screen.
3. By tapping [List Mode] icon under the screen, the display mode changes to [List Mode].

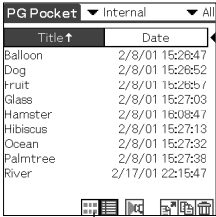


If there are no pictures in the selected category, the list is not displayed. To display all pictures, select [All] in the [Category] menu.

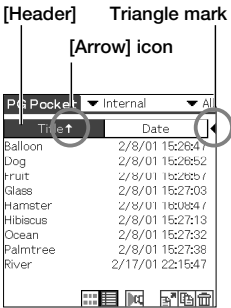


Selecting a picture in [List Mode]

1. Select a picture.
 By rotating the Jog Dial up and down, the square cursor moves line by line on the list.
2. Display the full screen.
 By clicking the Jog Dial, the display mode changes to [Full Screen mode] and the picture selected by the cursor is displayed on the full screen.
3. By tapping [List Mode] icon under the screen, the display mode changes to [List Mode].



[Preview Mode] icon



[List Mode]

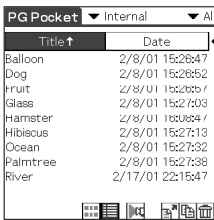
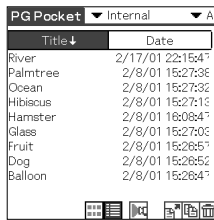
Sort

By tapping the items on the upper portion of screen, the item display is reversed and the list is in the sequence of the item highlighted. The list can be sorted in two ways, in an ascending order (listing data from smaller to larger values from the reference data) or descending order (listing data from larger to smaller values from the reference data).

To sort the list, tap the arrow icon (↑ or ↓) of the items.

↑ : Sorts the list in ascending order.

↓ : Sorts the list in descending order.

	↑ Ascending order	↓ Descending order
Title	Lists data from smaller value of text code.	Lists data from larger value of text code.
Date	Lists data from most recent date.	Lists data from older date.
Size	Lists data from smaller size.	Lists data from larger size.
		

*You can change the display order of the date (e.g., year/month/day or day/month/year) in the [Preferences] - [Formats] settings.

To replace an item

Tap the triangle mark to the right of the item field to replace either "Date" or "Size". "Title" cannot be replaced.

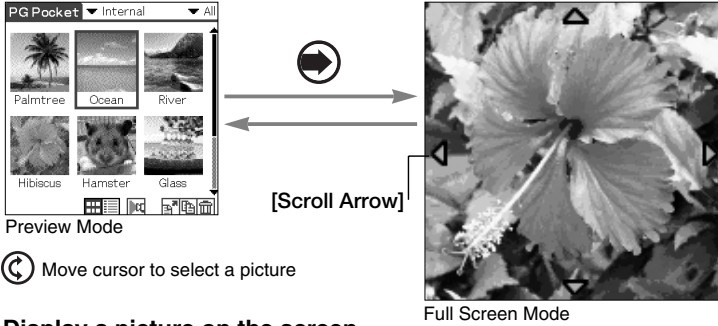
Font

Tap [Menu] button of the CLIE handheld and select [Font] from [Option] menu to open [Font selection dialogue]. Select the font to be used for [List display mode] in [Font selection dialogue].

Browsing Pictures

To browse pictures, switch the display mode to the browse mode ([Full Screen Mode] [Memo Mode] [Information Mode]).

To switch to the browse mode, select either from the thumbnails in [Preview Mode] or from the lists in [List Mode]. Press the Jog Dial.



Display a picture on the screen.

In [Full Screen Mode] or [Memo Mode]

The screen size of CLIE handheld is 320 X 320 dots.

If a picture is larger than the screen size, a part of the picture is displayed.

To display the hidden part of the picture, use the Stylus to touch and hold the Scroll Arrow and to scroll the picture.

Displaying another picture

Display another picture. Display the next or former picture.

By rotating the Jog Dial, another picture is displayed.

Rotate Jog Dial up: Displays a picture above the picture currently displayed in [List Mode].

Rotate Jog Dial down: Displays a picture below the picture currently displayed in [List Mode].

Enlarging or reducing the picture size

A picture less than 160 X 160 dots is automatically displayed in double size. In this case, you can enlarge or reduce the picture size by tapping the button at the lower left of the screen.

: Reduces the size to half (original size)

: Enlarges to double size

Changing to other reviewing modes

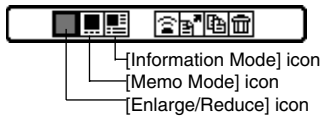
To change to other reviewing modes, tap [Memo Mode] or [Information Mode] icon at the bottom of the screen.

To display these icons on the bottom of the screen, tap [Menu] button of Sony handheld.

Changing to selection modes

Changing the display mode from [Information Mode]

By tapping [Preview Mode] icon in the lower portion of screen, the display mode is changed to [Preview Mode]; and by tapping the [List Mode] icon, the display mode is changed to [List Mode].



Changing the display mode from [Full Screen Mode] or [Memo Mode]

By clicking the Jog Dial, the display mode returns to [Preview Mode] or [List Mode]. It also returns to [Preview Mode] by tapping the screen.



[Memo Mode]



[Information Mode]

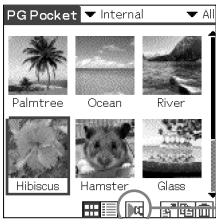


Slide Show

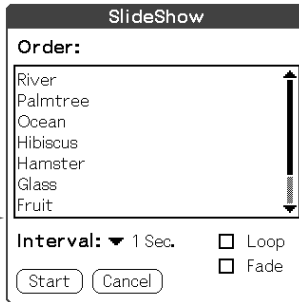
What is Slide Show?

The Slide Show function automatically displays two or more pictures in a preset order. PictureGear Pocket helps you set the sequence for displaying pictures, interval of display, and fade effect. Slide Show is controlled by [Slide Show] dialog.

To display [Slide Show] dialog, tap [Slide Show] icon at the bottom of the screen in the selection mode ([Preview Mode] or [List Mode]).



[Slide Show] icon



[Slide Show] dialog

[Order]

The order of pictures displayed here is the display sequence of the Slide Show. The sequence displayed in the selection mode is used for the initial setting. To change the order, drag and drop the titles.

[Interval]

Set an interval for displaying a picture. Select the interval from the DropDown Menu.

[Fade]

Set the fade effect to be executed.

[Loop]

By checking this box, the Slide Show is repeated automatically from the starting picture after the last picture is displayed.

[Start]

Closes [Slide Show] dialog and starts the Slide Show.

[Cancel]

Closes [Slide Show] dialog.



[Fade]

When a picture is changed to another picture, the currently displayed picture gradually fades off and then the next picture appears. This is called the "fade effect".

Starting the Slide Show

By tapping [Start] button in [Slide Show] dialog, the screen is changed to full screen display and the pictures in the category are displayed in order.

Ending the Slide Show

While the Slide Show is displayed, either click the Jog Dial, tap the screen or press the [Back] button to end the Slide Show. The selection mode reappears.

If the loop is not set, the Slide Show is ended automatically after the last picture is displayed and the selection mode reappears.

If you display a picture less than 160 X 160 dots

The picture is automatically displayed in double size.

Organizing Pictures

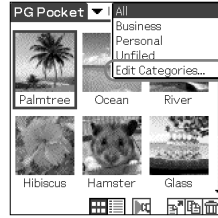
Sorting Pictures

By setting [Category], the pictures stored in CLIE handheld and **Memory Stick** are organized.

Reference: 2.5 "Slide Show", 2.8 "Moving or Copying".

Setting up categories

1. Select [Edit Category ...] from [Category] menu in the selection mode, and open [Edit Category] dialog.
2. Tap [New] and enter a new category name.
3. To change a category name, tap [Rename] and enter a new category name.
4. To delete a category, select a category name and tap [Delete].
If there are pictures in a category that you wish to delete, the category of these pictures is automatically changed to [Undefined Category].



[Preview Mode]



[Edit Category] dialog

Selecting the category of a picture

1. Tap [Information Mode] icon in at the bottom of the screen to switch to [Information Mode].
2. Tap [Category] menu and select the category for a picture displayed on the screen.



[Information Mode]

[Category] menu
Select the category.

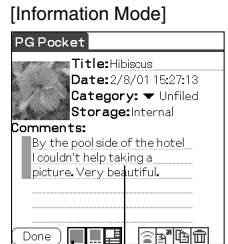
Add comments

You can add comments to the pictures stored in PictureGear Pocket.

1. Tap the [Information mode] icon at the bottom of the screen to switch to [Information mode].
2. Enter comments in the [Comments field] with the stylus.
3. The first 3 lines of the [Comments field] are displayed in screen with [Memo Mode].
Tap the [Memo Mode] icon to switch to [Memo Mode].



[Memo Mode]



[Information Mode]
Comment field

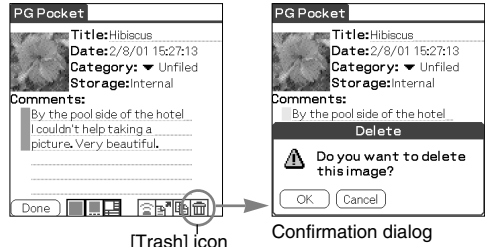


To display [Trash] icon, tap the [menu] of CLIE handheld.

Deleting

Deleting a picture

1. Tap [Trash] icon displayed at the bottom of the screen in the browsing mode.
2. The confirmation dialog is displayed. Tap [OK] to delete the picture and to return to [Preview Mode]. Tap [Cancel] just to return to [Preview Mode].



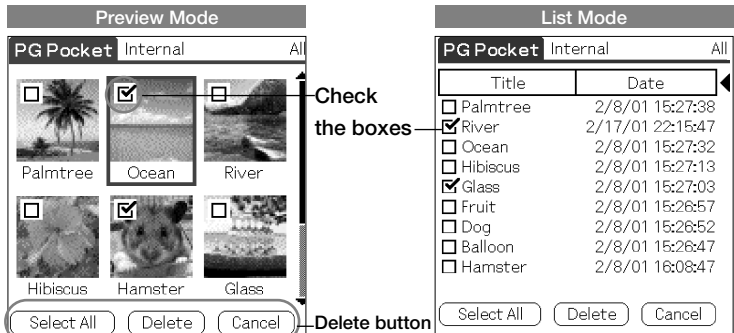
Deleting multiple pictures

1. Tap the [Trash] icon at the bottom of the screen in the selection mode ([Preview Mode] or [List Mode]) to open [Delete Mode].

[Preview Mode] : To open "selection" check box at the top left of the thumbnail and to change the bottom of the screen to the delete button.

[List Mode] : To open "selection" check box at the left of the title and to change the bottom of the screen to the delete button.

2. Check the check boxes of the pictures to be deleted.
3. Tap [Delete] button to display [Deletion Confirmation Dialog]. Tap [OK] to delete the pictures and to return to the selection mode after deleting the checked pictures.



When [Delete Mode] is selected, [Storage] and [Category] menus displayed at the top of the screen cannot be changed.

[Cancel]
Cancels the check (selection) and returns to the selection mode. (Return to selection mode by pressing the [Back] button of CLIE handheld.)

[Delete]
Executes deletion. [Deletion Confirmation Dialog] opens.

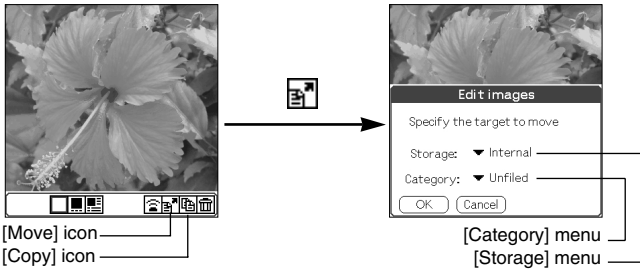
[Select All]
Selects all pictures.

Moving or Copying

You can move or copy a picture to another category or storage area.

Moving or copying a picture

1. Tap [Menu] button of CLIE handheld in the browse mode to display [icon]. To move a picture, tap [Move] icon. To copy a picture, tap [Copy] icon.
2. The confirmation dialog box for the move or copy target is displayed. Select [Storage] and [Category] menus. Tap [OK] to move or to copy and to return to the selection mode. To cancel the move/copy, tap [Cancel] to return to the selection mode. Or press the [Back] button of CLIE handheld.



Difference between move and copy

When you move a picture, the picture is removed from the original category (or storage). When you copy a picture, the picture remains in the original category (or storage).

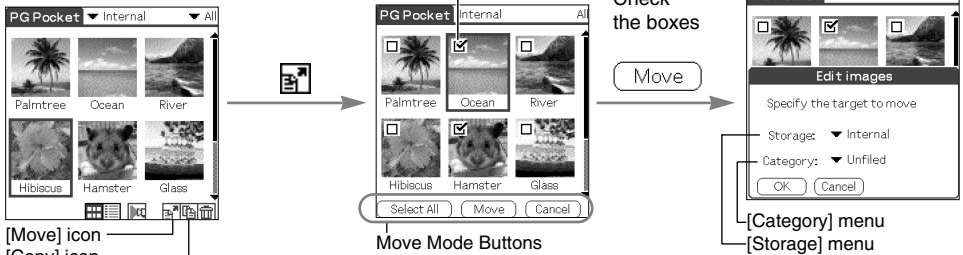


Move or Copy the pictures of the duplicated name.

PictureGear Pocket deletes the pictures in the target first when the pictures of the same name exist in the target to move or to copy. Please be aware of the picture names because the warning dialogue is not displayed.

Moving or copying multiple pictures

1. Tap [Move] icon or [Copy] icon in the selection mode ([Preview Mode] or [List Mode]) to switch to the move mode or copy mode.
2. Check the selection check box of the pictures to be move or copied.
3. Tap [Move] to move the pictures. Tap [Copy] to copy the pictures.
4. The confirmation dialog for the move or copy target is displayed. Select [Storage] and [Category] menu. Tap [OK] to move or copy the pictures and to return to the selection mode. Tap [Cancel] to return to the selection mode.



[Select All]
Selects all pictures.

[Move]
Executes to transfer.
[Edit images Dialog] opens.

[Copy]
Executes to copy.
[Edit images Dialog] opens.

[Cancel]
Cancels the check (selection) and returns to the selection mode.
Or press the [Back] button of CLIE handheld.



Tap the "Move" or "Copy" icon to open the "Selection" check box at the top left of the thumbnail, and to change the bottom of the screen to the copy button. At this time, the "Category menu" disappears and cannot be changed.

3

Advanced Functions of PictureGear Pocket

Beam Pictures to Another CLIE Handheld	3.2
Preparations	3.2
Selecting a picture	3.2
Beam a picture	3.2
Handling Pictures on a Memory Stick	3.3
Pictures (camera pictures) taken by a digital still camera	3.3
Browsing the pictures on Memory Stick	3.3
Restrictions on [Camera Picture]	3.4
Saving in CLIE Handheld	3.4
Using PictureGear Pocket in other applications	3.6
Pasting to Address Book	3.6

3 Advanced Functions of PictureGear Pocket

Beam Pictures to Another CLIE Handheld

PictureGear Pocket helps you to send pictures to the PictureGear Pocket application of another CLIE handheld using IR (Infrared) communication.

Preparations

Turn on IR communication of both sending and receiving CLIE handheld. Check whether the IR ports of the sending side and receiving side are positioned properly so that communications are possible between them. Place both CLIE handheld units to make their IR ports facing each other. The distance between them is 10 ~ 20 cm. There should be no obstruction between these units. Make sure that PictureGear Pocket is installed in both receiving and sending devices (e.g., your computer and CLIE handheld) to receive and send data. The optimal data transfer distance may differ depending on the operational relation between CLIE handheld and your computer, or devices other than Sony. Change the distance and try the procedure again.

Start PictureGear Pocket of the sending side CLIE handheld.

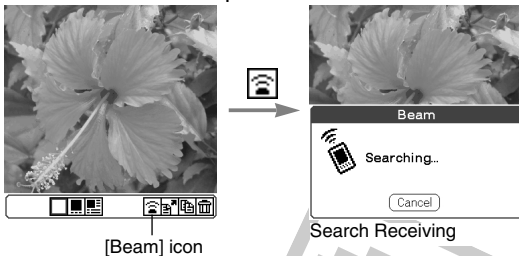
Selecting a picture

Switch PictureGear Pocket of the sending side to the selection mode ([Preview Mode] or [List Mode]) and select a picture to be transferred.

Reference: 2.2 "Selecting a picture in [Preview Mode]", 2.3 "Selecting a picture in [List Mode]".

Beam a picture

After switching the screen to [Full Screen Mode], tap the menu and then click the [Beam] icon from [Icon]. PictureGear Pocket detects the receiving side CLIE handheld and starts beaming the picture if communications are possible.



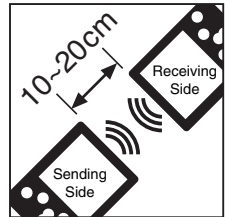
Do not move the CLIE handheld units until the picture is transferred.

After the picture is to beam, the sending side CLIE handheld returns to the status before the sending operation. The receiving side CLIE handheld displays the received picture in [Full Screen Mode].

3.2



You can only use the infrared data transfer function if picture files are stored in the CLIE handheld. If pictures are stored on a "Memory Stick," you cannot use this function.



You can transfer only one picture at one time. You cannot transfer multiple pictures.



Even if PictureGear Pocket of the receiving side CLIE handheld is not started when the picture is received, the CLIE handheld still receives the picture. In this case, start PictureGear Pocket after receiving the picture. You can display the received picture in [Full Screen Mode].

Handling pictures on a Memory stick

Pictures (camera pictures) taken by a digital still camera

Still pictures taken by a digital still camera or digital video camera and stored on a **Memory stick** use a standard picture format called "DCF."

This is a different format from the one used by PictureGear Pocket which is called "PGP."

PictureGear Pocket can show DCF format pictures (i.e., "camera picture") and store them in CLIE handheld or on a **Memory stick** after converting to PGP format (i.e., "PDA picture"). CLIE handheld can then handle these pictures.

Browsing the pictures on Memory stick

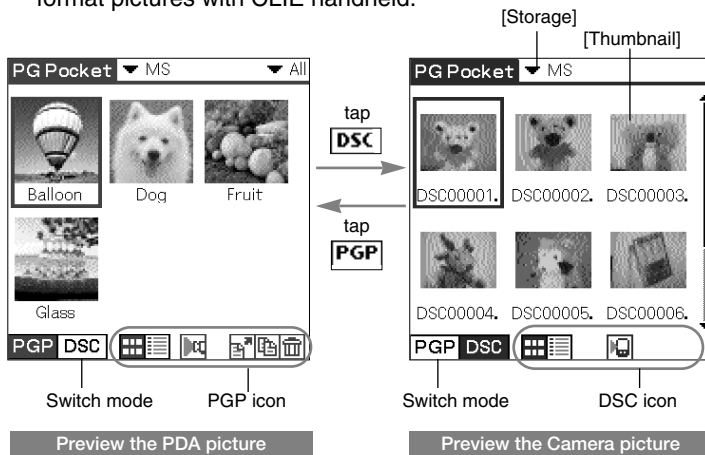
1. Insert a **Memory stick** into CLIE handheld.
2. In the [Storage] menu at the top of the screen, change [▼Internal] to [▼ MS].
3. Use the switch button at the bottom of the screen to select the picture format.
Select DCS to display the camera picture(s) on a **Memory stick**. With this selection, the function of PictureGear Pocket is limited and the screen and the icon displays are changed for DSC exclusively.
Reference: 3.4 "Restrictions on [Camera Picture] "
Select PGP to display PDA pictures on a **Memory stick**. Operate in the same way as PDA pictures with CLIE handheld.
4. Switch the [Storage] menu back to [▼ Internal] to display PGP format pictures with CLIE handheld.



If a warning dialog box related to the **Memory Stick** appears after you change [Storage] menu to [MS] menu, see "Trouble-shooting" at the end of this manual.



When pictures stored on a "Memory Stick" are displayed, you cannot return to [Home] from [Preview Mode] by pressing the [Back] button.

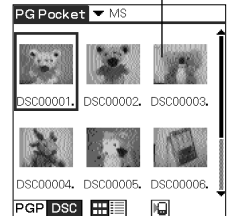


Restrictions on [Camera Picture]

There are several restrictions when using [Browse Mode].

1. It is impossible to move, copy, delete, transfer and beam Camera pictures. You can, however, save the picture in CLIE handheld after converting to PGP format.
2. [Storage] menu is fixed to [MS] and you cannot select other items.
3. You cannot create a category. [Category] menu is fixed to [Select All].
4. [Camera Picture] can be browsed in [Full Screen Mode].
5. [Camera Picture] can be displayed in 3 modes; [Preview Mode], [List Mode] and [Full Screen Mode].
[Memo Mode] and [Information Mode] are not available.

Thumbnail [JPEG File]



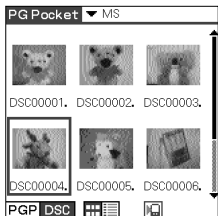
Saving in CLIE Handheld

You can save [Camera Picture] in **Memory Stick** to CLIE handheld. When you save the picture in CLIE handheld, [Camera Picture] should be converted from the DCF format to the standard PGP format.

Store a [Camera Picture] in Sony handheld

1. Select the picture in the selection mode ([Preview Mode] or [List Mode]) and click the Jog Dial to get [Full Screen Mode].
2. Tap [Menu] button of CLIE handheld in [Full Screen Mode] and tap again [Store] icon shown at the bottom of the screen. Before storing a picture from a "Memory Stick" in PGP format in your CLIE handheld using the [Store] icon, you can confirm the picture by pressing the [Store confirmation] icon.
3. The confirmation dialog appears. Select [Category] menu of the target.

Tap [OK] or press the [Back] button of CLIE Handheld, so that the Camera picture is converted to the format of PictureGear Pocket and is stored in CLIE handheld, then the selection mode reappears. Tap [Cancel], then return to the selection mode.



Camera picture

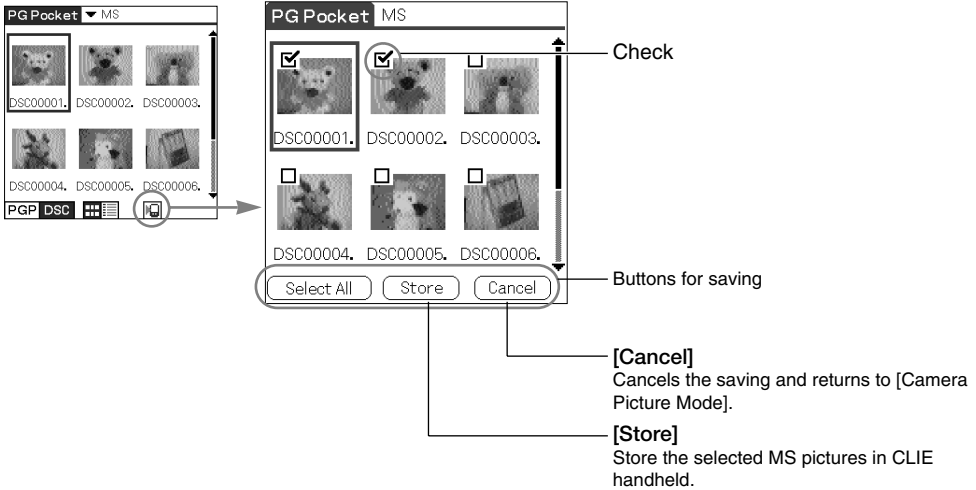
[StoreConfirmation] icon



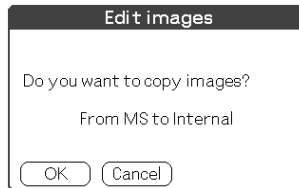
Store button

Store multiple [Camera Pictures] in CLIE Handheld

1. After switching the mode to browse [Camera Picture] in the selection mode ([Preview Mode] or [List Mode]), tap [Store] icon at the bottom of the screen. Then, [Selection] check box appears on the upper left of the thumbnail or on the left of the title. The buttons for storage appear at the bottom of the screen.



2. Check the check box of the Camera pictures to be stored.
3. Tap [Store] to store the pictures. The Edit images dialog appears.



[Storage]menu :Internal fixed.
[Category]menu :Unfiled fixed.



The pictures saved in CLIE handheld are converted to the PGP format and cannot be reviewed in [Camera Picture Mode].

4. Tap [OK], so that Camera pictures are converted to PictureGear Pocket format and stored in CLIE handheld, then the selection mode reappears. Tap [Cancel] or press the [Back] button of CLIE Handheld, then return to the selection mode.

Using PictureGear Pocket in other applications

Pasting to Address Book

You can paste a picture in PictureGear Pocket to a standard Address Book.

For further details, please refer to the CLIE handheld operating instructions manual.

Regarding DCF

DCF (Design rule for Camera File system) is an industry standard format for storing pictures established by JEIDA (Japan Electronic Industry Development Association).

DCF format pictures are stored in the "DCIM" directory of **Memory stick**.

PictureGear Pocket displays "Thumbnail pictures" (160x120 dots) of the DCF format pictures. Therefore, the quality is inferior to the real picture.

In order to display clearer pictures with PictureGear Pocket, it is recommended to use PictureGear Lite on your Computer when converting the pictures to PGP format and storing on a **Memory stick**.
Reference: 4 "PictureGear Lite"

4

PictureGear Lite

What is PictureGear Lite?	4.2
Installation of PictureGear Lite	4.3
Start	4.3
Help	4.3

PictureGear Lite

What is PictureGear Lite?

PictureGear Lite is software to control the picture files stored on a computer's hard disc, floppy disc, PC card, or **Memory Stick**. You can browse files, view images, and play back motion pictures. Useful functions for PictureGear Pocket for CLIE handheld are also included.

Main functions

Browsing

To browse slides (pictures) stored in the selected folder.

As long as the slide is in a format supported by PictureGear, different slides can be shown in the same screen at the same time.

Slides can be copied, transferred, and arranged in order by date, name, or personal preference.

Display a slide

While browsing, your favorite pictures can be displayed in large size on another window.

Print a slide

Your favorite slides can be printed. Multiple slides can be printed in order on one sheet of paper.

Replay motion pictures

Motion files of MPEG1, AVI, QuickTime 3.0 or QuickTime 4.0 format can be played back.

Use with peripheral equipment

Send pictures to CLIE handheld using Hotsync or save them on a **Memory Stick** and display them with PictureGear Pocket of CLIE handheld.

You can also display motion pictures using the gMovie application of CLIE handheld. For details, refer to [gMovie manual.pdf] (gMovie Instruction manual) by clicking [manual] on the Main Screen that appears just after inserting the CD-ROM into your computer.



Refer to the Add-on Application Guide of CLIE handheld about how to install the application software.



Main Screen

Installation of PictureGear Lite

Install PictureGear Lite from the CD-ROM supplied with CLIE handheld according to the instructions on the screen.

For further details, please refer to the Add-on Application Guide of CLIE handheld.

Start



Click "Start" menu of Windows and select "Programs" from the Pop-up menu. PictureGear Lite starts "Programs" and the main screen is opened.

Help

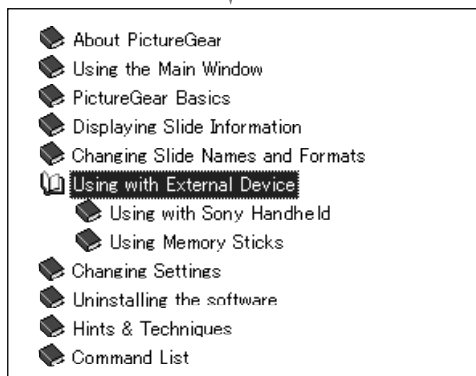
Please refer to the Help files of PictureGear Lite for the detailed usage of PictureGear Lite.

To display Help, select "HELP (H)" - "How To Use PictureGear" on the main screen.

For picture transfer to CLIE handheld and the conversion of the picture from DCF format to PGP format, please refer to "Using with CLIE Handheld" of the Help index.



Menu



Help

Help Guide

Troubleshooting

When you access a Memory Stick

Depending on the condition of the **Memory Stick**, a warning dialog may appear after you change [Storage] menu to [MS]. In this case, operate according to the instructions in the dialog.

Format

Cause

When an unformatted **Memory Stick** for CLIE handheld is inserted, this warning dialog appears.

Corrective action

Tap [OK] to format. All data is erased and it is initialized to the CLIE handheld format.



Warning dialog

Directory dialog

Cause

The warning dialog as below is displayed when the directory for the using application is not set in a memory stick.

For example, the warning dialog is displayed when you insert the memory stick only used for the digital camera.



Warning dialog

Corrective action

Tap [Yes allocate] button to make a directory for PictureGear Pocket.

The directory for PictureGear Pocket is made and [Store] menu is changed to [▼ MS] and the selection mode appears.

When you tap [No], [Storage] menu remains in [▼ internal] and the selection mode appears.

Please refer to the Operating Instructions manual of CLIE handheld regarding the warning dialogue of memory stick.

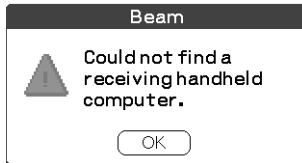
During Infrared communication

Cannot find receiver's CLIE Handheld.

Cause

When [Beam Receive] in Preferences is turned off or the distance or the direction of the receives CLIE handheld makes IR Communication impossible.

The following message appears on the sender's CLIE handheld during "Infrared communication":



Warning dialog

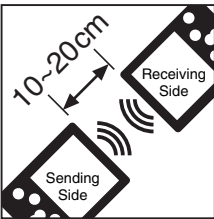
Solution

Turn [Beam Receive] on. Tap the "Preferences" icon of [Home] to open [Preferences]. In the dropdown menu, select "General" and turn [Beam Receive] on.

Solution

When [Beam Receive] is on, please confirm that the IR port of the sender and the receiver are placed to communicate each other.

In other words, both the IR ports have to face each other at 10-20 cm without any obstacles. The optimal data transfer distance may differ depending on the operational relation between CLIE handheld and your computer, or devices other than Sony. Change the distance and try the procedure again.



The battery consumption is a little higher when the "Beam receive" is left on.

Cannot locate the receiver 's PictureGear.

Cause

When the following warning dialog is displayed on the receiver's CLIE handheld, PictureGear Pocket is not installed on the receiver's CLIE handheld.



Warning dialog

Solution

Install PictureGear Pocket on the receiver's CLIE handheld.

Cannot HotSync.

After connecting the line, you cannot HotSync with a computer.

Cause

You cannot HotSync when the line is still connected after using communication software such as Palmscape or CLIEMail.

Solution

Disconnect the line. To disconnect the line, change to "Network" in the top right drop down menu of the "Preferences" screen, then tap the "disconnect" button.

Index

- Back button** 0.5
- Beam** 3.2
- Browse Mode** 1.3
 - Full Screen Mode* 1.3, 2.4, 3.4
 - Information Mode* 1.3, 2.6
 - Memo Mode* 1.3, 2.6
- Camera Picture** 3.3
- Category (menu)** 2.6
 - Delete* 2.6
 - New Category* 2.6
 - Select* 2.2, 2.3, 3.4, 3.5
- Check Box** 0.5
- Comment** 1.2, 2.6
- Cursor** 2.2, 2.3

- Date** 1.2, 2.3
- DCF Format** 3.3, 3.6
- Display Mode** 1.2
- Drag** 0.5
- DropDown Menu** 0.5
- DSC** 3.3

- Enlarge/Reduce** 2.4

- Full Screen Mode** 1.3, 2.4, 3.4

- Home Button** 0.5
- HotSync** 4.2, 5.2

- Icon** 1.2
 - Beam* 3.2
 - Copy* 2.8
 - Full Screen Mode* 1.3, 2.4, 3.4
 - Information Mode* 1.3, 2.4, 2.6
 - List Mode* 1.2, 2.3
 - Memo Mode* 1.3, 2.4, 2.6
 - Move* 2.8
 - Preview Mode* 2.2
 - Slide Show* 2.5
 - Store* 3.4
 - Trash* 2.7
- Information Mode** 1.3, 2.6
- Interval** 2.5
- Items** 1.2, 2.3

- Jog Dial** 0.5, 0.6, 2.2, 2.3, 2.4

- Launch** 1.4
- List Mode** 1.2, 2.3
- Loop** 2.5

- Memo Mode** 1.3, 2.6
- Menu Button** 0.5
- Memory Stick** 3.3, 5.1

- PDA Picture** 3.3
- PGP Format** 3.3, 3.4
- Picture**
 - Beam* 3.2
 - Browse* 2.4
 - Copy* 2.8
 - Delete* 2.7
 - HotSync* 4.2, 5.2
 - List* 2.3
 - Move* 2.8
 - Select* 1.2, 2.2
 - Sort* 2.3
- PictureGear Lite** 4.2
- Preview Mode** 1.2, 2.2

Screen Size	2.4
Scroll Arrow	1.2 , 1.3 , 2.4
Selection Box	0.5
Selection Mode	1.2
<i>List Mode</i>	<i>1.2 , 2.3</i>
<i>Preview Mode</i>	<i>1.2 , 2.2</i>
Size	2.3
Slide Show	2.5
Storage (menu)	2.2 , 2.8 , 3.5
Tap	0.5
Thumbnail	1.2 , 2.2 , 3.5
Title	1.2 , 2.3

