

PicseL

Viewer

for CLIÉ

User

Guide

Copyright © PicseL 2002

Neither the whole nor any part of the information contained in, or the product described in, this document may be used, sold, transferred, adapted or reproduced in whole or in part in any manner or form or in any media except with the prior written permission of the copyright holder.

The product described in this document is subject to continuous development and improvement. All particulars of the product and its use contained in this document are given by PicseL in good faith. However, the content of this document is provided "as is", without warranties of any kind with regard to its accuracy or reliability, and specifically excluding all implied warranties, for example of merchantability, fitness for purpose, title and non-infringement. In no event shall PicseL be liable for any special, indirect or consequential damages whatsoever resulting from loss of use, data or profits, arising out of or in connection with the use of this document. PicseL reserves the right to revise the document or withdraw it at any time without prior notice.

No licence is granted (nor any rights of whatsoever nature granted), express or implied, to any intellectual property by this document. PicseL, the PicseL cube device, Viewer and ePAGE are trademarks or registered trademarks of PicseL Technologies Ltd.

Throughout this document, the trade names and trademarks of some companies and products have been used. No such uses are intended to convey endorsement of or other affiliations with the document.

This preliminary manual refers to PicseL Viewer for CLIÉ version 1.0 for Palm OS 5. It may be changed before the final product release.

Document number: PICSEL-EUG-0007G, January 2003

<http://www.picseL.com/>

Contents

Introduction	4
Getting Started	5
Panning and Zooming a document	6
Opening from My Documents	7
Using PicseI Viewer	8
Document View	8
Folder View	10
Document Format Restrictions	12
History View	14
Bookmark View	15
Other Options	15
Configuring PicseI Viewer	17
Acknowledgements	20
Questions and Answers	21

Introduction

PicseI Viewer is a revolutionary product for document browsing on thin-client computing platforms. Its leading edge technology allows you to view documents on your CLIE without any file-conversion or loss of content. Powerful real-time zooming and panning of documents using intuitive gestures allows close examination and broad overviews with equal ease.

PicseI's patented ePAGE™ document display environment is the core technology which brings new levels of satisfaction to your experience. It allows you to view almost all documents in almost all permutations.

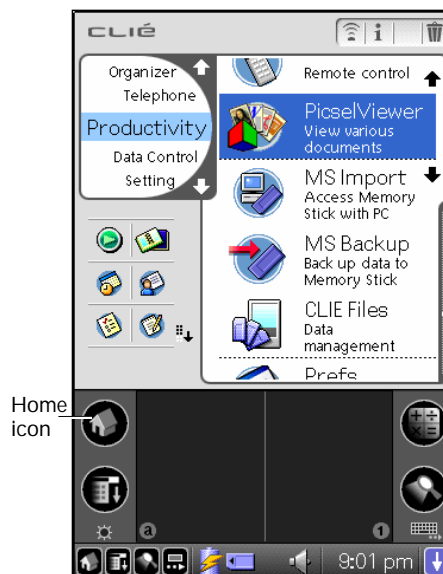
Central to its appeal is ePAGE's ability to read files from desktop environments in their native form. No conversion from the original format or compromise is required.

PicseI Viewer's intuitive user interface makes navigating documents easier than ever. Simply by touching the pen to the device's screen, you can pan (scroll) your document sideways or vertically to view larger pages on a smaller screen. With a gesture of the pen you can zoom in or out to view intricate details or overviews. Moving to the next page is as simple as turning a leaf in a book and a sophisticated yet attractive menu is available with a tap on the icon in the corner of the screen.

PicseI Viewer supports HTML and all significant image formats (JPEG, GIF, PNG, BMP, etc.), as well as most popular document types including PDF, Word, Excel and PowerPoint. These prove the package as a leading-edge multimedia and document environment

Getting Started

Now that you have a Sony CLIE handheld powered by PicseL Viewer, you're ready to see it in action! It is available from the CLIE Application Launcher screen, so to begin, tap the Home icon at the bottom of your CLIE's screen. Your device may differ slightly from the pictures shown here. Please consult the "Read This First" operating instructions for details of your model.



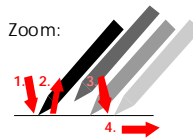
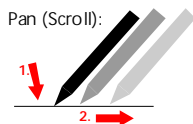
CLIE application launcher showing PicseL Viewer

Tap the 'PicseL Viewer' icon in the application launcher. This will launch the application, briefly showing its starting screen. After launching, you should open a document using the Folder View, described later in this user guide.

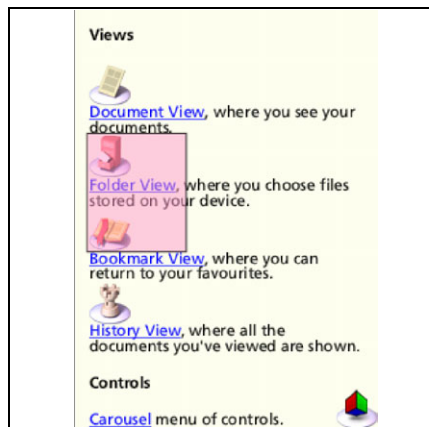
Panning and Zooming a document

The document you wish to see is normally larger than the screen space available. There are two ways to see more of it.

To pan (or 'scroll') to a different part of the document, simply stroke your pen across the screen in the direction you would like the page to move. To pan the page up, touch and hold your pen somewhere near the middle of the screen and draw a line towards the top, then take your pen off the screen. You can do this repeatedly so that you can view any size of document. Further, you can 'throw' the document across the screen, and it will continue moving after you have released the pen. This gives you time to start another stroke. This inertia can be used to save time while you pan around the document.



You can also zoom the size of the document, so that more or less of it is visible at a different size. The tap-and-stroke gesture for this is to tap your pen briefly near the middle of the screen then tap and hold it again in the same place. Now stroke your pen up to zoom in or down to zoom out. Release your pen when you reach the scale you like. Using this, you can view small print details on diagrams or get an overview of a whole page.



The zoom box, showing in pink the area that will be expanded using the horizontal tap-and-stroke gesture.

A further method for zooming into a specific area of the document is available in PicseL Viewer, called 'Zoom Box'. Use the same tap-and-stroke gesture as above, starting at the top-left corner of the area you would like to fill the screen. However, you should then stroke your pen to the right instead of vertically. A coloured box will appear showing

the area that will be enlarged. Move your pen to make this cover the area of interest, and release it.

While you hold your pen down on the screen, the quality of the image may be poorer. This is to make the zooming more responsive to your movement. When you release your pen, the quality will improve.

You can also pan the document up and down using the Jog Dial Navigator on your CLIE. If you briefly press and release the Jog Dial, you will then be able to pan horizontally by turning it again. Press it once more to return to vertical panning. You can also zoom in and out by pressing and holding the Jog Dial in and turning it at the same time.

Opening from My Documents

You will probably want to view documents of your own. One of the best ways of doing that is to copy them from your own desktop computer using "Memory Stick" media. You may even prefer to keep your main working versions on the "Memory Stick" media, so you don't have to copy anything. PicseL Viewer can read your favourite document formats such as HTML, PDF, Word, Excel and PowerPoint without any re-processing.



PicseL Viewer carousel icon

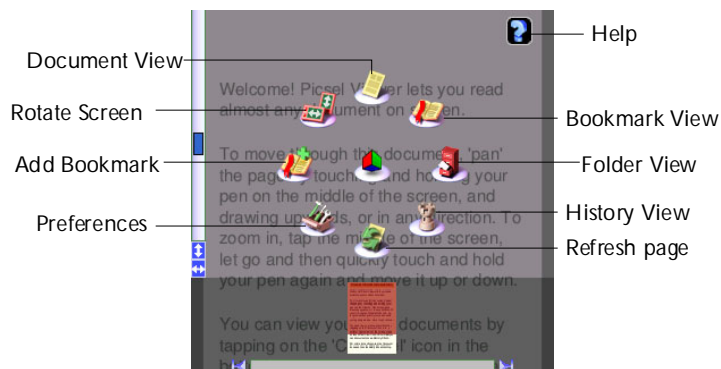
To look at files on your "Memory Stick" media, tap the PicseL Viewer carousel icon and then tap the Folder View icon, from where you can select documents to view. Tap your pen on any of the files and after a moment it will appear on screen. You can move it around, and zoom in or out, using the pen gestures you learnt earlier.



Folder View icon

Using Picseel Viewer

The main place for controlling Viewer is the carousel, which you can open by tapping the Picseel logo in the bottom right corner of the screen. From here you can go to the Folder View, the History View or return to your document. You can also change your preferences for the way the system operates. If you are impatient to try it out, you can tap and hold your pen on any of the options to see a tool-tip explaining its purpose.



The carousel

Document View



Document View icon

Most of the time, you are looking at the '**Document View**', in which you see the content of your chosen document. There are, however, four different views in Picseel Viewer. If you want to return to the document view when you are in a different mode, you can choose the document view icon on the carousel, as shown.

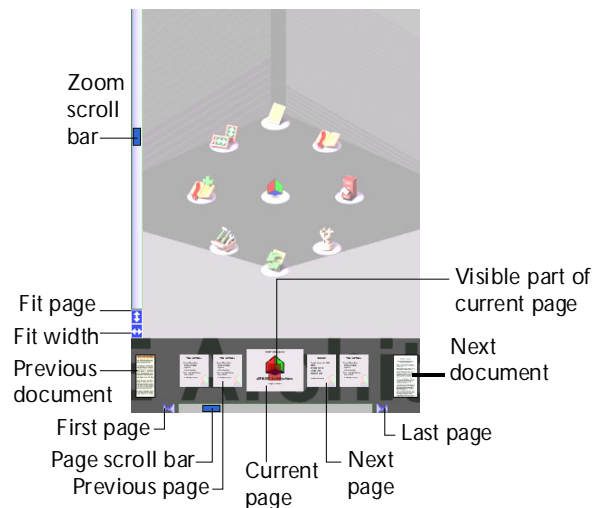
While in this view, you can pan (scroll) around the page simply by stroking your pen over the page in the direction you want it to move.

For example, to see what is lower down, press and hold your pen near the middle of the screen and stroke it upwards. You can also use the Jog Dial to pan the document. Move the wheel up or down to pan vertically, then press and release the Jog Dial briefly to switch to horizontal panning, in which moving the wheel up or down will pan the document horizontally. Pressing and releasing the Jog Dial again will return to vertical panning mode.

To zoom in, briefly tap the screen near the middle then press and hold it in the same place. Now, stroking upwards will zoom in and stroking downwards will zoom out. If you press and hold the Jog Dial, turning the wheel while pressing it will zoom in or out.

While you are zooming or panning, the document will appear less clearly and will then 'sharpen up' when you release the pen. This is perfectly normal, and the clarity and speed with which the document moves are part of the unique power of Picxel's ePAGE technology.

There are two ways to move to a different page in a document. You can draw a 'page flick' stroke across the bottom of the screen, as if you were holding a page of a book (start in the middle at the bottom, then stroke to the left to reach the next page, or the right to return to the previous page). Alternatively, you can click on the carousel and use the thumbnail copies of pages or the scroll bar along the bottom to find the page you want. You can also tap one of the small 'thumbnail' pages to view it.



The navigation controls which appear around the carousel

The tools around the side of the carousel offer more features. The scroll bar along the bottom of the screen moves between pages and can be moved by stroking your pen over the box to move through the

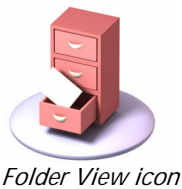
thumbnails for all of the pages of the current document. The arrows at the end of the scroll bar move directly to the first and last pages of the document, respectively. The page scroll bar is only useful for multi-page documents, which do not include HTML pages or pictures.

You can also return to the previous document you viewed by tapping on the 'previous document' thumbnail or page icon on the left of the carousel, and after that, can move forward again to the 'next document' if you wish. You can go back several steps by tapping on the 'previous document' repeatedly as it changes, although you may find the History View more helpful. These thumbnails are displayed as page icons if you move very quickly between documents.

The zoom scroll bar, to the left of the carousel, allows you to enlarge or reduce the document without using the tap-and-drag gesture. Simply stroke your pen up or down over the box in the scroll bar. PicseL Viewer can also scale the document automatically to fit on the screen with the 'fit page' icon, or to fit the width of the document into the width of the screen using the 'fit width' icon.

The visible part of the current page is shown on the current page thumbnail as a red area which you can also move around with your pen, should you wish to.

Folder View



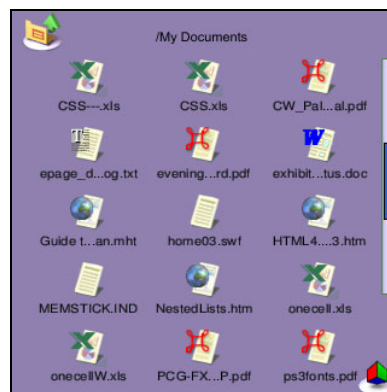
Folder View icon



Up-Folder icon

You can look at documents stored on "Memory Stick" media using the '**Folder View**'. To see it, click on the Folder View icon as shown.








The name of the current folder's path location is shown at the top of the screen and you can go to the folder above that in the folder structure by tapping the 'Up-Folder' icon in the corner. You can also move to a higher folder by clicking on the name at the top of the screen.



Folder View

The folders, which contain further documents, are shown in yellow with tabs in the corners. Documents look like sheets of paper in various other colours, depending on their type. You can tap a folder icon to see its contents, or tap a document icon to open it with Picxel Viewer.

The following document formats are supported:

Document Type	Icon
HTML	
Adobe PDF	
Microsoft Word	
Microsoft PowerPoint	
Microsoft Excel	
Plain Text	
Pictures	

In the Folder View you can only access documents on the "Memory Stick" media, including any folders you may have created on it.



Icon list



Name list

If you have a lot of documents, or have documents with long names, you may wish to fit more on the screen by having smaller icons. If you open the carousel, you will see icons for displaying the smaller 'name' list or larger 'icon' list. When the list is too long to fit on the screen, you can use the scroll bar on the right to move through the list.



Sort by Type icon



Sort by Name icon

You can also sort the order of documents listed, either by name or by document type, by opening the carousel and tapping one of the sort icons as shown.

You can select documents by turning the Jog Dial Navigator, on the side of your CLIE, and open (view) the documents by pressing it. To return to the folder above the current level, turn the Jog Dial Navigator up past the first document to select the 'Up Folder' icon.

Document Format Restrictions

PicseL Viewer can display documents with a high level of accuracy, however, some features may not be displayed in certain document formats.

Overall restrictions

- Bold, italic font and font changes are not supported in Japanese text because there is only one Japanese font installed. Characters are displayed in the standard font. Western text can be displayed in standard fonts including bold and italic once the English language pack has been installed.
- With respect to the font format, only the font size and character color can be changed using the installed Japanese font.
- Background colors are not supported.
- When documents of other formats are inserted in Microsoft Office documents, the inserted data may not be displayed.
- The resolution of images in a document may be reduced to conserve internal memory.
- Large document files may not be opened, depending on the memory limits of the device and compression used within the document.

Microsoft Word restrictions

- Documents created in Word 95/97/2000/2002 can normally be displayed.
- Certain types of pictures are not supported (3-D Style, WordArt, AutoShape Connectors and Callouts, etc). Text Box is also not supported.
- Figures created using Word 95 may not be displayed because the format is different.
- Columns created with the Columns command under the Format menu may not be displayed correctly.

Microsoft Excel restrictions

- Documents created in Excel 95/97/2000/2002 can normally be displayed.
- Certain types of pictures are not supported (3-D Style, WordArt, AutoShape Connectors and Callouts, etc).
- With respect to the chart function, only column, line and pie charts are supported.
- Charts created in Excel 95 may not be displayed because the format is different.

- Dashed lines, dotted lines and borders may not be displayed as specified.
- Formulas are not supported.

Microsoft PowerPoint restrictions

- Documents created in PowerPoint 97/2000/2002 can normally be displayed.
- Certain types of pictures are not supported (3-D Style, WordArt, AutoShape Connectors and Callouts, etc).
- Animation effects, buttons and links are not supported.

Adobe Portable Document Format (PDF) restrictions

- With respect to the table border styles, only single solid line and double solid line are supported.
- Document and page information is not supported.

HTML restrictions

- HTML 3.2 and 4.0 are supported.
- With respect to the table border styles, only single solid line and double solid line are supported.
- Superscripts, subscripts and scrolling texts are not supported.

Plain text restrictions

- Plain 7-bit ASCII text, Latin-1 text and Japanese are supported.
- The wrap display function is not supported, thus text is displayed on one line until a line feed is encountered.

Image format restrictions

- JPEG, PNG, GIF and BMP are supported.
- JPEG 2000 and thumbnail images are not supported.

Microsoft and related products for Windows (Microsoft Word, Microsoft Excel, Microsoft PowerPoint) are registered trademarks of Microsoft Corporation in the United States and other countries.

Adobe® and Acrobat® are trademarks of Adobe Systems Incorporated.

Company names and product names in this document are trademarks or registered trademarks of their respective holders. The trademark symbol (TM) and registered trademark symbol (®) are omitted in this document.

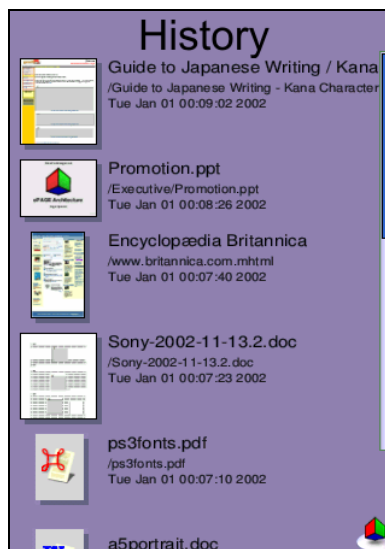
For details of restricted items, American customers should visit "Sony CLIE Handheld Support" at <http://www.ita.sel.sony.com/support/clie/>
European customers should visit "CLIE European Support Website" at <http://www.clie-link.com/>

History View



History View icon

If you've looked at a lot of documents, you may want to return to one you saw earlier. The **'History View'** shows your previously visited documents. A thumbnail image is shown for documents visited in this session of using PicseL Viewer, and a document-type icon is shown for those visited earlier. It also shows the document's name, location, and the date of your viewing. To see this view, click on the history view icon in the carousel, as shown.



History View

To return to any of the documents from the history view, tap the thumbnail picture of that page twice. After one tap the thumbnail will animate to indicate that you have selected it.

Once you have visited a large number of pages, the history will record more than it can display on screen. You can pan through the history view using the scroll bar on the right, as in the Folder View.

Documents will remain on the history list until a certain number of days have passed. You can control this period in the preferences (between 0 and 28 days), as described later. You can sort the order of entries in the history view. At the bottom of the carousel are icons to sort by date visited, by file name alphabetically, and by document name (title) alphabetically. The thumbnail icons for the files are not stored between sessions.



Sort by URL



Sort by Date

The Jog Dial Navigator can also be used to select previous documents in the History View. Turn it up or down to highlight a thumbnail image, then press it to return to that document.

Bookmark View



Bookmark View icon

For your favourite documents, you can keep a list in the **'Bookmark View'**. This looks similar to the history view but includes only those pages you have explicitly added. For each document, it shows a page icon and the title, file name and the date it was added. As before, tap the Bookmark View icon to see the bookmarks, then to return to one of the documents, tap its icon twice.

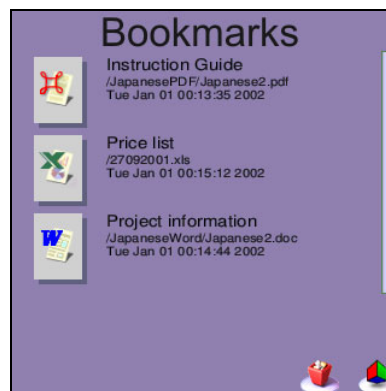


Add bookmark icon

The first time you look at the bookmarks, the page will probably be empty. To add the current page (from the Document View) to the bookmarks, you can use the **'Add Bookmark'** icon, shown here. If you wish to delete one of your bookmarks, tap the small icon image of the page, then tap on the dustbin icon in the corner.



Dustbin icon



Bookmark View

The Jog Dial Navigator can also be used to select documents in the Bookmark View. Turn it up or down to highlight a thumbnail image, then press it to return to that document.

Other Options



Help icon

The **Help** icon, at the top of the carousel, takes you to a document explaining how to use PicseL Viewer. You can scroll the text up and down using the scroll bar on the right, or change to another page using the drop-down menu at the top.

To exit from PicseI Viewer, tap on the Home icon at the bottom of your screen, which will return you to the Application Launcher.

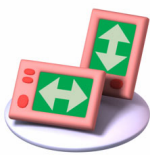


The 'silk screen' area, including the Home icon

You can also close the carousel and return to the page you were previously viewing by tapping your pen in the grey area where there are no icons.

The 'silk screen' area at the bottom of the screen can be hidden to make more space for your document viewing by tapping the small down-arrow at the very bottom. Tap the arrow again to reveal the silk screen area.

Configuring PicseI Viewer



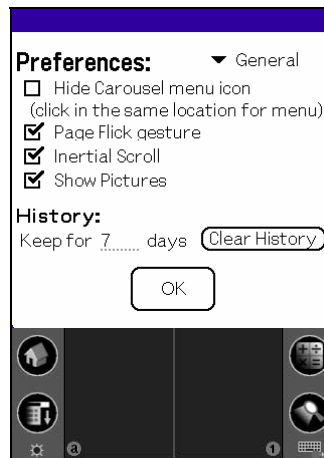
*Screen
orientation icon*

There are a number of choices you can make about the way PicseI Viewer works, to make your viewing experience more pleasant. First among these is the screen orientation. You may prefer to read lines of text across the screen more clearly, or you may wish to view a whole page at one time. To make the best use of the shape of your CLIE, PicseI Viewer can rotate its display by 90° when you click on the screen orientation icon as shown. When you do this, the document and other views are rotated, but not dialogue boxes or any other software running on your CLIE. You can tap the orientation icon again to rotate the screen back to its original form.



*Preferences
icon*

There are also a number of further options for PicseI Viewer which can be set using dialogue boxes. To see these, choose the Preferences icon, as shown. There are three pages. To move between these, use the 'settings' drop-down menu in the top-right corner.



'Preferences' dialogue box

To select any of the options in the dialogue boxes, tap your pen in the square or enter text and numbers by tapping on one of the dotted lines and writing with the Graffiti system at the bottom of the screen. When you are finished, tap the 'OK' button.

General Preferences

'Hide Carousel menu icon' allows you to choose whether or not to see the carousel icon at all times in the corner of the Document View. If it is visible, you are reminded that you can open the carousel and perform other tasks. If it is hidden, the entire screen is dedicated to viewing your document, but you can still tap in the corner to see the carousel.

'Page Flick gesture' allows you to move between pages in a document by flicking your pen across the bottom of the screen. To move to the next page, touch your pen at the middle bottom of the screen, then draw a stroke to the left. To return to the previous page, draw a stroke to the right.

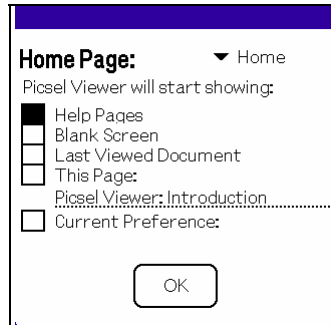
'Inertial Scroll' affects documents as you pan them around the screen. When enabled, you can 'throw' documents across the screen and they will continue to move after you lift your pen. This gives you time to move your pen to another point, ready to continue panning. If you find this disconcerting, you can disable it here.

'Show Pictures' saves memory in your CLIÉ by not displaying images in your document. This may be useful for very large documents.

'Keep for ... days' specifies the period after which the thumbnail pictures and descriptions of pages are purged from the history view. Each entry occupies part of CLIÉ's limited memory, but also allows you to see what you were looking at not just earlier today, but some time ago. To edit the text here, tap in the box then open the on-screen keyboard and type your new number. If you reduce the period, old

documents will be removed from the history immediately if appropriate. The value must be between 0 and 28 days.

The **'Clear History'** button deletes all memory of recently visited documents from your CLIÉ.



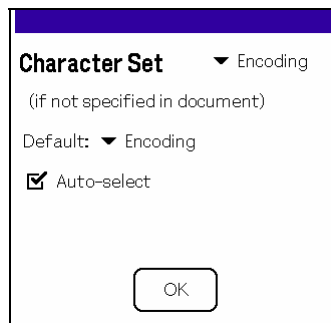
'Home' section of the preferences

Home Page Preferences

If you now select **'Home'** from the drop-down menu, you will see another page of choices. This defines what document PicseL Viewer will display when you first start it from application launcher. The default, when you first install it, is to go to the help pages. You can also choose a blank screen which will do nothing until you open a document in the Folder View. Thirdly, you can return to the same document you were viewing the last time you used PicseL Viewer. Finally, you can return to the document which is currently open at the time that you select the 'This Page' option. The fifth 'Current Preference' is displayed for your information.

Encoding Preferences

Text documents that you open may contain writing in a range of possible 'character encodings' which your CLIÉ must identify before displaying the text. This can be controlled in the third page of preferences.



'Home' section of the preferences

PicseI Viewer can attempt to '**Auto-select**' the character encoding, finding one which is compatible with and seems to be relevant for the document you are opening. This is normally correct, and so should normally be enabled.

Most document formats contain encoding information directly, and are not affected by these preferences. If you find documents which are displayed with meaningless characters, you may switch off Auto-select and make a choice of '**Default Encoding**'. In Japan this is often Shift_JIS, and in Western countries is normally ISO-8859-1.

The fourth page of the preferences dialogue box gives copyright notices and acknowledgements for the product.

Acknowledgements

PicseI are grateful to the developers of various libraries used within this product, who have asked that the following text be shown here.

libjpeg

This software is based in part on the work of the Independent JPEG Group, copyright (C) 1991-1998, Thomas G. Lane. All Rights Reserved except as specified.

libpng:

libpng versions 1.0.7, July 1, 2000, through 1.2.2, April 15, 2002, are Copyright (c) 2000-2002 Glenn Randers-Pehrson

zlib:

Copyright (C) 1995-2002 Jean-loup Gailly and Mark Adler. This software is provided 'as-is', without any express or implied warranty. In no event will the authors be held liable for any damages arising from the use of this software.

Questions and Answers

We hope that your experience with PicseI Viewer is painless and pleasant. However, a number of questions may arise that have simple solutions, such as the following.

Why is there no document on screen?

PicseI Viewer may have failed to open a document (perhaps because the file had been corrupted), and left you with a blank screen. The simplest solution is to tap on the carousel icon in the bottom right corner of the screen and use the folder view to open a document.

Why is there no carousel icon on screen?

The button which you tap to show the carousel (menu) can be hidden according to an option in the preferences. Even when it is hidden, you can still tap the same place on the screen to show the carousel. If you don't know whether your screen is in landscape or portrait orientation, hold the device the normal way round and try tapping in the bottom right and the top right corners. See the section above entitled 'Configuring PicseI Viewer' for instructions on restoring the icon.

PicseI Viewer has run out of memory. What do I do?

PicseI Viewer has to load each document into memory and process it, in order to display it on screen. If your CLIE is running very low on available RAM, then PicseI Viewer may be unable to display some documents. Depending on the document, it may help to switch off '**Show Pictures**' in the preferences. The only other solutions are to delete some files or applications from memory or to view a different document.

Why can't I access any Internet Web sites?

PicseI Viewer for CLIE has no Internet access capability.

Why are some characters not appearing in my document?

PicseI Viewer comes with a broad range of font characters as standard, but it may not include certain symbols that you may use.

Why do the fonts look different from my PC?

PicseI Viewer includes a range of fonts, but not all of those you have on your PC, so it has to substitute them for the nearest it has.

How can I get the most out of using PicseI Viewer?

Practice the gestures for panning and zooming, as well as the page flick to other pages, in order to get where you want quickly and accurately.

Use the panning inertia to move around documents quickly. With brisk strokes you can scroll the page and it will keep moving while you lift the pen, ready for another stroke.

The icons are designed to be large enough for you to use a finger or the back of your finger nail to select options and navigate the page. So you may not need your pen at all! Be careful not to scratch the screen.

Rotating the screen orientation is easy and convenient for viewing documents at different times depending on your wishes. Landscape format may allow you to read text across the width of the page, while portrait format gives you an overview of each page.